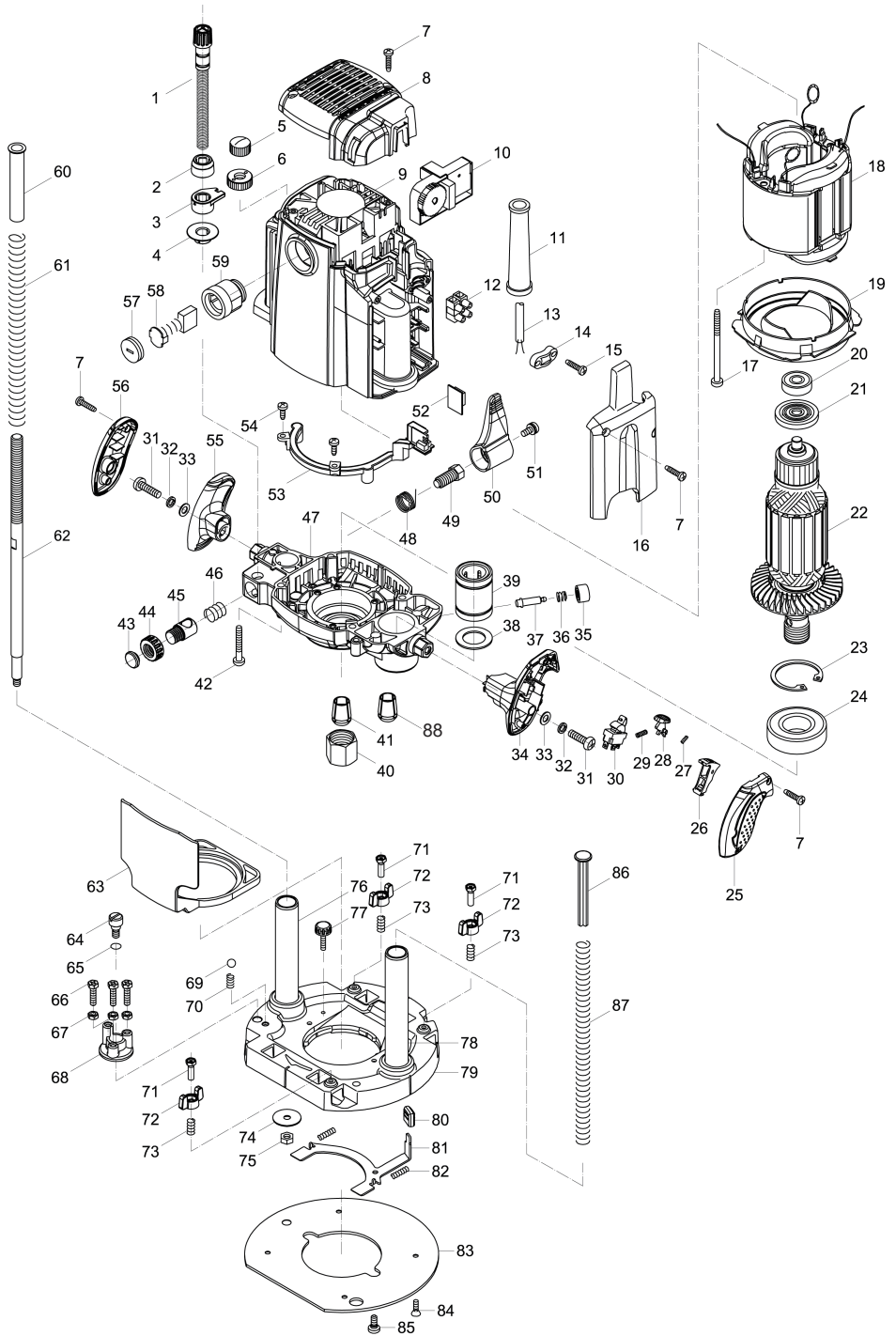


HRE1120CP



NO.	DESCRIPTION	SPEC.	NO.	DESCRIPTION	SPEC.
1	ADJUSTING SCREW		45	ADJUST NUT	
2	GRADUATED RING		46	PRESSURE SPRING	
3	SCALE INDICATING SEAT		47	GEAR BOX	
4	DEPTH POINTER		48	TORSION SPRING	
5	NUT		49	SCREW	
6	SETSCREW NUT		50	LOCK LEVER	
7	TAPPING SCREW	ST4×16F	51	SCREW	M5*12
8	REAR COVER		52	POWER MODULE	
9	HOUSING		53	LED LIGHT	
10	CONTROLLER		54	SCREW	M4*12
11	CORD GUARD		55	LEFT HANDLE	
12	TERMINAL BLOCK		56	LEFT HANDLE COVER	
13	CABEL		57	BRUSH CAP	
14	CABEL CLAMP		58	CARBON BRUSH	7×17×18.5
15	TAPPING SCREW	ST4×14F	59	BRUSH HOLDER	
16	SIDE COVER		60	RADAR TUBE	
17	TAPPING SCREW	ST7×75C	61	SPRING	
18	STATOR		62	SCREW	M10
19	BUFFLE PLATE		63	CHIP DEFLECTOR	
20	BEARING	6000	64	LIMIT BLOCK SCREW	
21	WASHER		65	O RING	Φ11×1.5
22	ARMATURE		66	SCREW	M5*20
23	RETAINER	42	67	NUT	M5
24	BEARING	6004	68	STOP BLOCK	
25	RIGHT HANDLE COVER		69	STEEL BALL	C7
26	SWITCH LEVER		70	SPRING	
27	SPRING		71	SCREW	M5*16
28	REVERSE SELF LOCK BUTTON		72	THUMB KNOB	
29	SPRING		73	SPRING	2
30	SWITCH		74	FLAT WASHER	Φ6×Φ18×1.2
31	SCREW	M6*25	75	NUT	M6
32	WASHER	6	76	SHORT GUIDE	
33	FLAT WASHER	Φ6.5×Φ12×0.8	77	SCREW	M4×16
34	RIGHT HANDLE		78	LONG GUIDE	
35	LOCK KNOB		79	ALUMINUM BASE	
36	SPRING		80	RUBBER SLEEVE	
37	PIN		81	LACK PLATE	
38	WASHER	Φ20×Φ32*1.5	82	SPRING	
39	LINEAR BEARING	LM20UU	83	BASE PLATE	
40	COLLET NUT		84	SCREW	M4*10
41	COLLET	12MM	85	SCREW	
42	TAPPING SCREW	ST5×35C	86	POLE	
43	LOCK NUT COVER		87	SPRING	
44	LOCK NUT		88	COLLET	8MM